

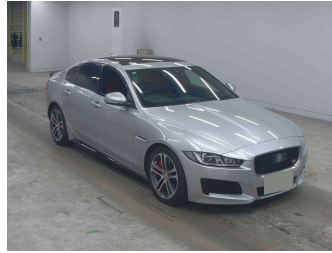
2016 Jaguar XE S



FINANCE THIS CAR FROM

\$0.00*
per week

*Finance calculation based on a 48 month term, no deposit and with an example annual fixed interest rate of 15.95%. Actual interest rate may be higher or lower. Includes an establishment fee of \$505.95 and a monthly maintenance fee of \$3.50. Full term total amount payable of \$0.00. Estimate only, not an offer of finance. Terms, conditions and lending criteria apply.



Purchase Price **POA**

Includes GST, Registration & Licensing

Finance may be available on this vehicle. Ask one of our friendly staff for more information.

Gain peace of mind with Mechanical Breakdown Insurance. **Ask us how.**

Top features

- » Electric seats
- » Paddle Shift

Body Style
4 door

Odometer
66,006 km

Engine
3000 cc

Fuel Type
-

Transmission
CVT

Wheels
-

VIN
-

Interior
-

Safety
-

Reg No.
-

Ext Colour
Silver

History
-

Seats
-

CO2 Emissions
-

Energy Economy
-



Scan this QR code for more info
Stock ID: 4184